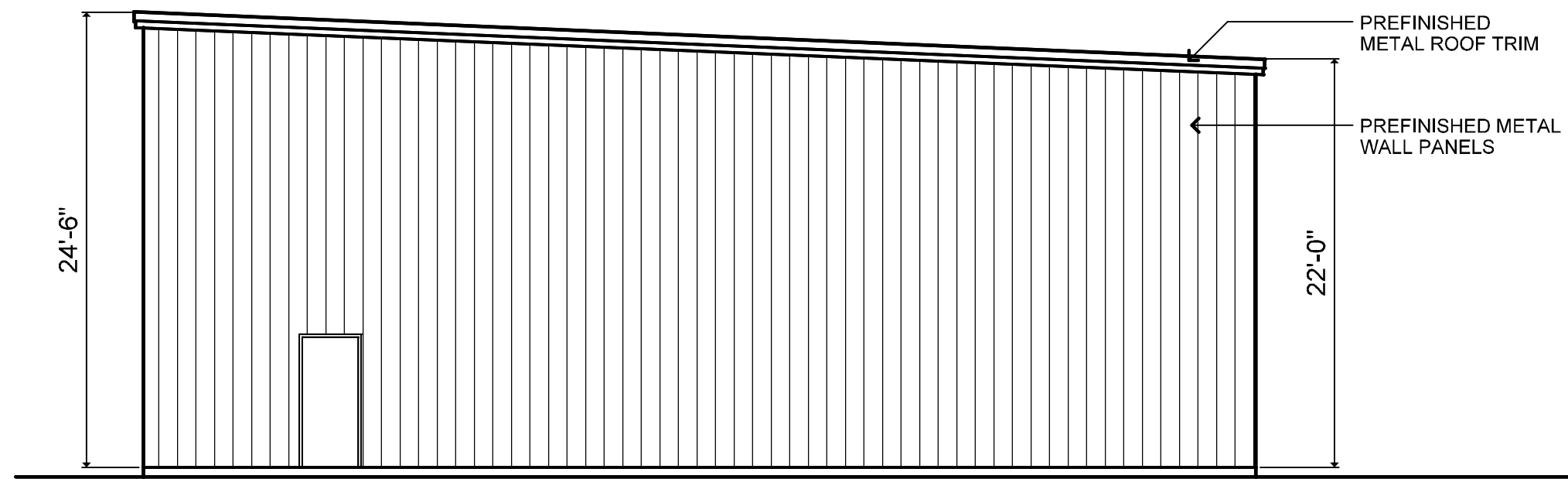


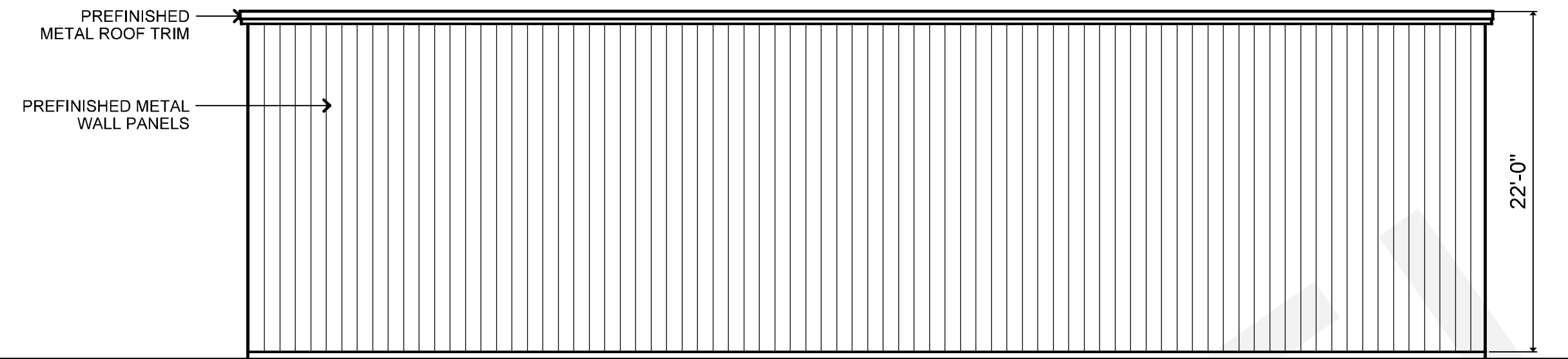
WEST WALL ELEVATION

SCALE: 1/8" = 1'-0"



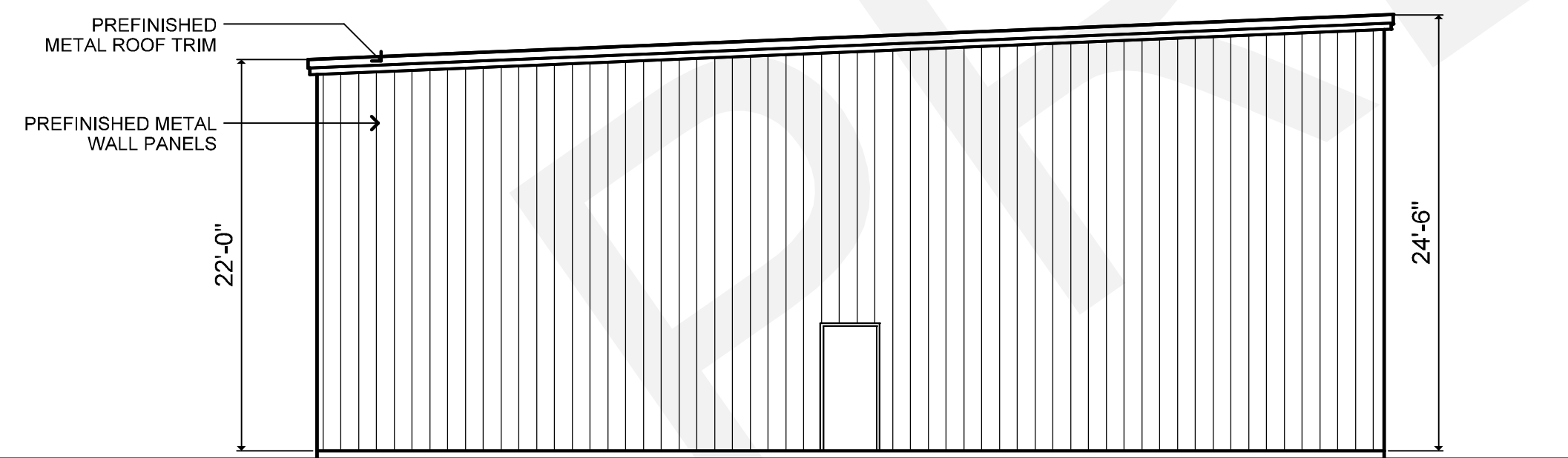
SOUTH WALL ELEVATION

SCALE: 1/8" = 1'-0"



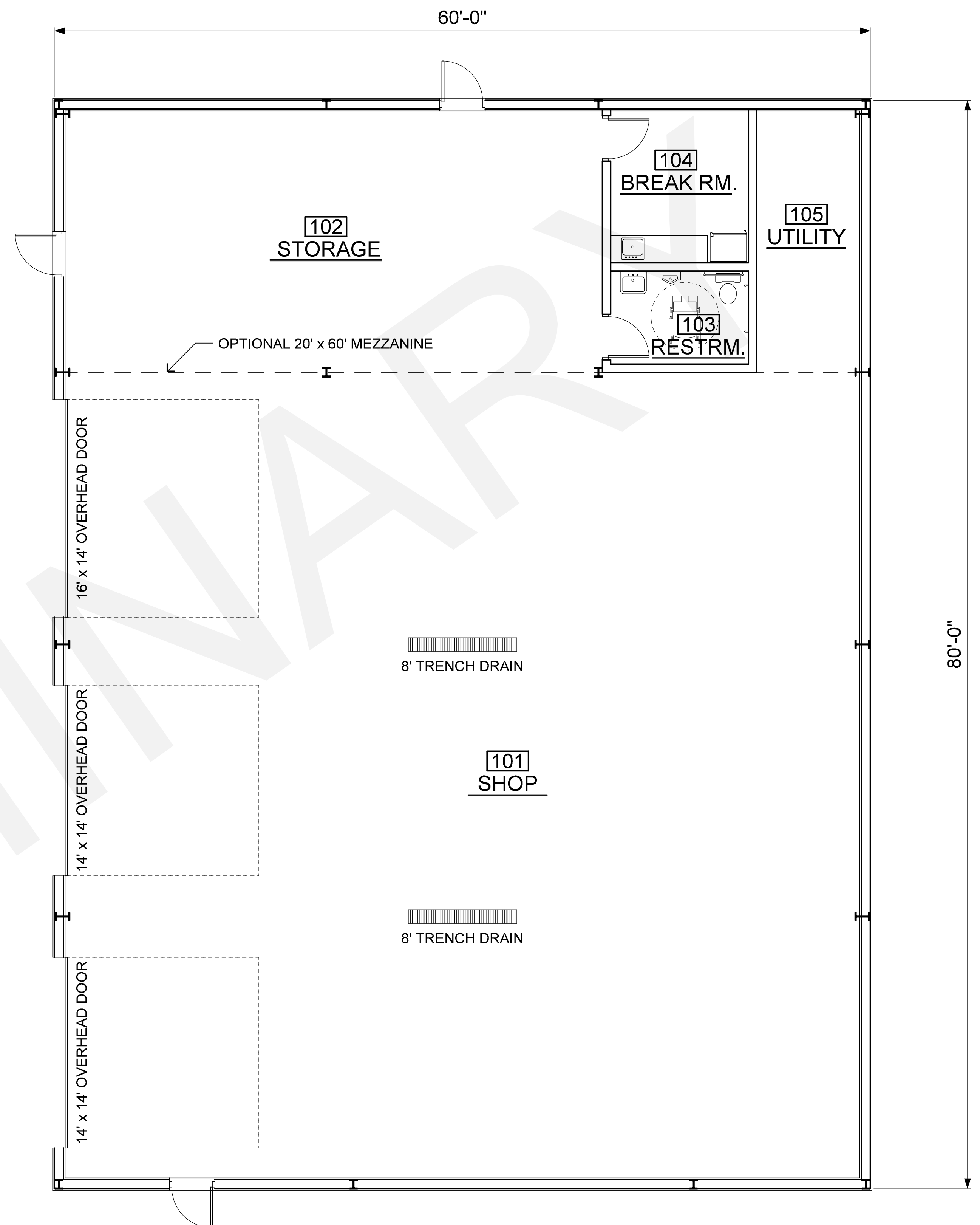
EAST WALL ELEVATION

SCALE: 1/8" = 1'-0"



NORTH WALL ELEVATION

SCALE: 1/8" = 1'-0"



FLOOR PLAN

SCALE: 1/8" = 1'-0"