

Design Elements

Current Colors:



New Building Colors similar to:



ALMOND

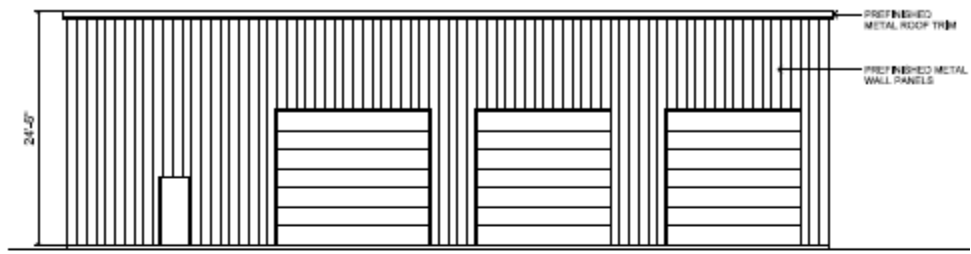
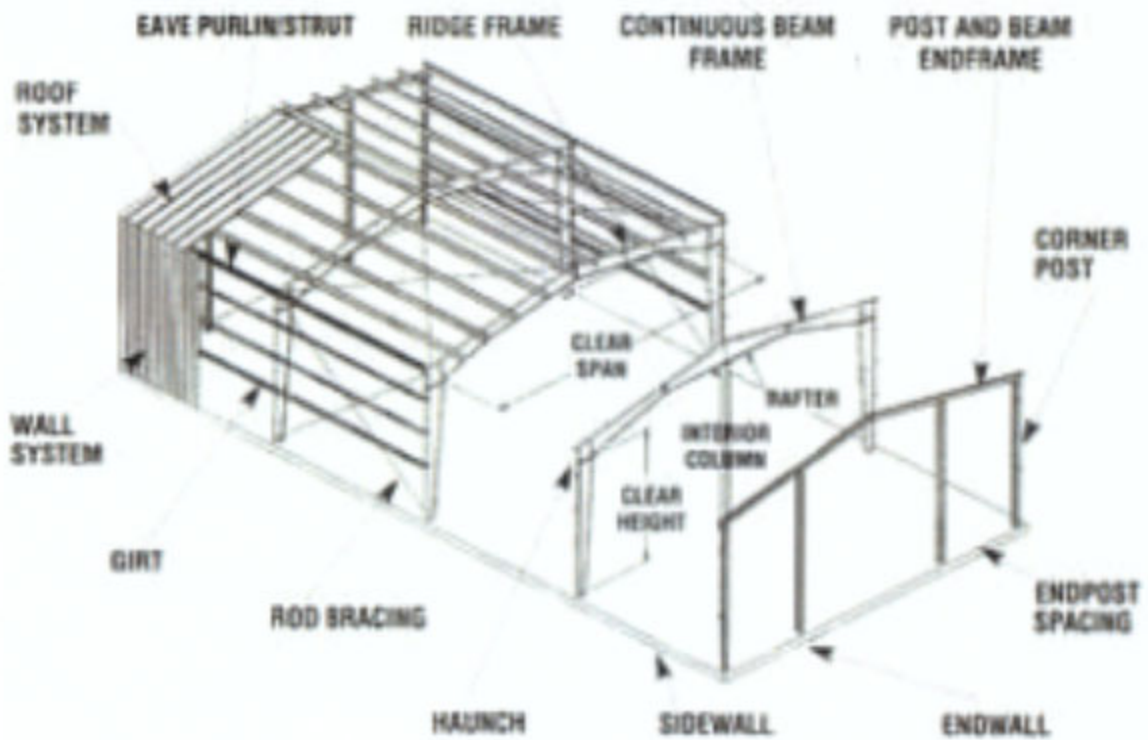


SANDSTONE

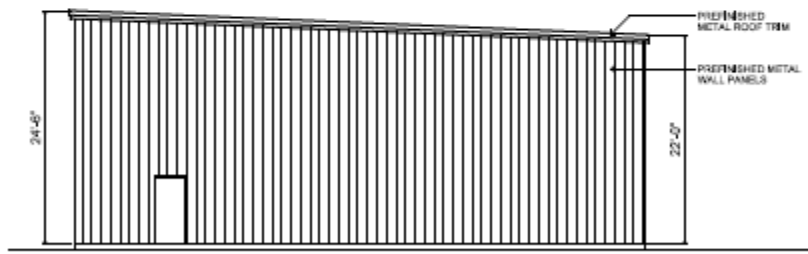
New Building Roof Color similar to:



BROWN



WEST WALL ELEVATION
 SCALE: 1/8" = 1'-0"



SOUTH WALL ELEVATION
 SCALE: 1/8" = 1'-0"



VARCO PRUDEN BUILDINGS

VEE RIB™ WALL PANEL

WALL SYSTEMS



FEATURES

- Available in 26, 24 or 22 gauge
- 36" wide panel with 1-1/4" recessed ribs 12" on center
- Available up to 39' in length
- Variety of color options with KXL finish and a 25 year paint warranty
- Installed with self-drilling color-matched fasteners
- Fasteners installed in V-groove
- Embossed exterior surface

BENEFITS

- Variety of gauge thicknesses to meet most codes and specifications
- Engineered for durability and aesthetically pleasing
- Long panel lengths minimize end laps for optimum wall integrity
- Superior paint finishes reduces maintenance costs
- Recessed fastener locations give the panel a semi-concealed profile with bold architectural lines
- Embossed surface provides attractive architectural finish





ROOF SYSTEMS

VARCO PRUDEN BUILDINGS

SSR – STANDING SEAM ROOF



FEATURES

- Roof slopes as low as 1/4":12"
- Panels offer 24" coverage with 3" high trapezoidal ribs
- Available in 24 ga. standard thickness; 22 ga. optional
- Finish options include unpainted Galvalume or KXL cool colors
- Patented VP ridge cap and clip design allow for thermal movement
- 360° seam creates weathertight seal
- Panels meet UL 90 and FM Class 1 ratings, Florida and Miami-Dade approvals

BENEFITS

- Unique ridge and clip design delivers long-term weathertightness
- The panels are mechanically seamed to a full 360° interlock to form an effective single membrane
- Designed for reliable performance backed by a 20-year warranty
- Available in cool colors for improved energy efficiency



New Locking Front Gate – Similar to the example below



Fencing

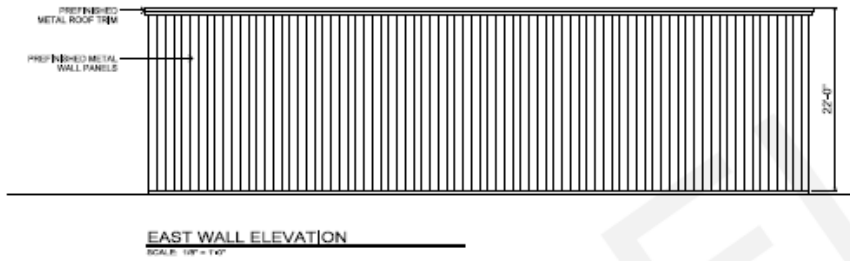
8' on the North side of the property and 6' on the South



6' Fencing against residential area



Building facing the residential area



Fence on Stacy Trail – 6'



Landscaping



Autumn Blaze Maple



Weigela Midnight Wine



Rose Glow Barberry



Mugho Pine



Black Hills Spruce

Signage

We will start out with the current V-Frame sign we currently use in East Bethel with no lights, a “Coming Soon” addition and a custom made 2 x 4 U-Haul sign that is still in the U-Haul approval phase.



(With photoshop elements)

When the shop is constructed, we will add a “roof” on the top of the sign to match the shop roof materials and add downward facing lighting under the roof. The roof will also be a darker color than what is shown to match the shop roof.

Current sign 4 x 8 with no lights

Future sign 8 x 8 with downward facing lights and a roof to match the shop roof

Retail Store - Lighted



Former Carwash – Same on Stacy Trail and 35W side. Not lighted

