



Memo

To: Mayor and Council
From: Dan Boyum
Stacy City Engineer
Project/File: 193804175
Date: April 4, 2024

Reference: Stacy Indoor/Outdoor Storage Facility – 2nd Story View Follow-up

Based on the discussions from the March 12, 2024 Council Meeting, we reviewed the heights needed to screen someone seeing headlights when looking out from a second story window to the east of the Stacy Indoor/Outdoor Storage Facility. See the attached figure drawing which shows an 11- to 12-foot-high fence that could be placed to screen that view. As discussed in past correspondence, a row of evergreens that height would also be an option.

A 12-foot-high fence essentially becomes a wall, and wind loads play a major role in its design. Until that analysis is done, we received a planning number from a fence company of \$300 per foot for a 12-foot-high fence/wall. The approximate fencing lengths discussed in the February 2024 memo for the area near 3120 and 31140 Ferris Trail was around $50+15 = 65$ feet.

In checking with a landscape architect, they estimated a 12-foot evergreen would cost around \$1,200 to \$1,400 installed. A 6-foot evergreen would cost around \$550 to \$650 installed. It would take a 6-foot evergreen around 6 to 8 years to grow from 6 feet to 12 feet in height. Based on the 50- and 15-foot lengths and 10' spacing on evergreens, we would estimate it would take around 14 evergreens.

We can discuss the figure drawing and the numbers above with the Council at the April 10th Council Meeting and then discuss next steps.

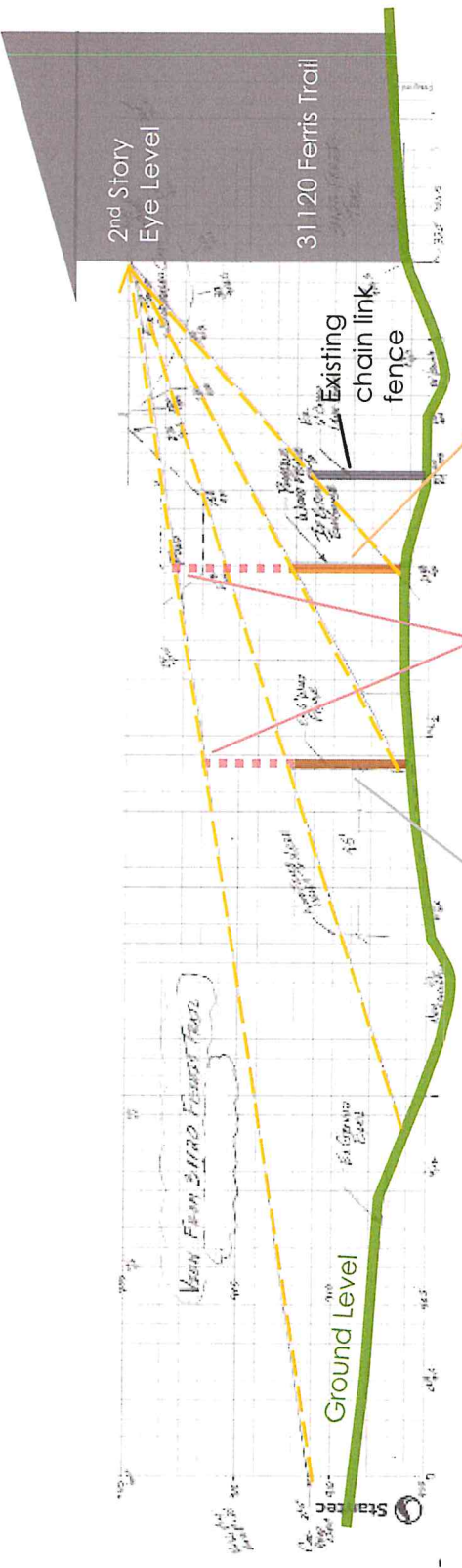
Sincerely,

STANTEC CONSULTING SERVICES INC.

Dan Boyum
Stacy City Engineer
Phone: (612) 712-2021
dan.boyum@stantec.com

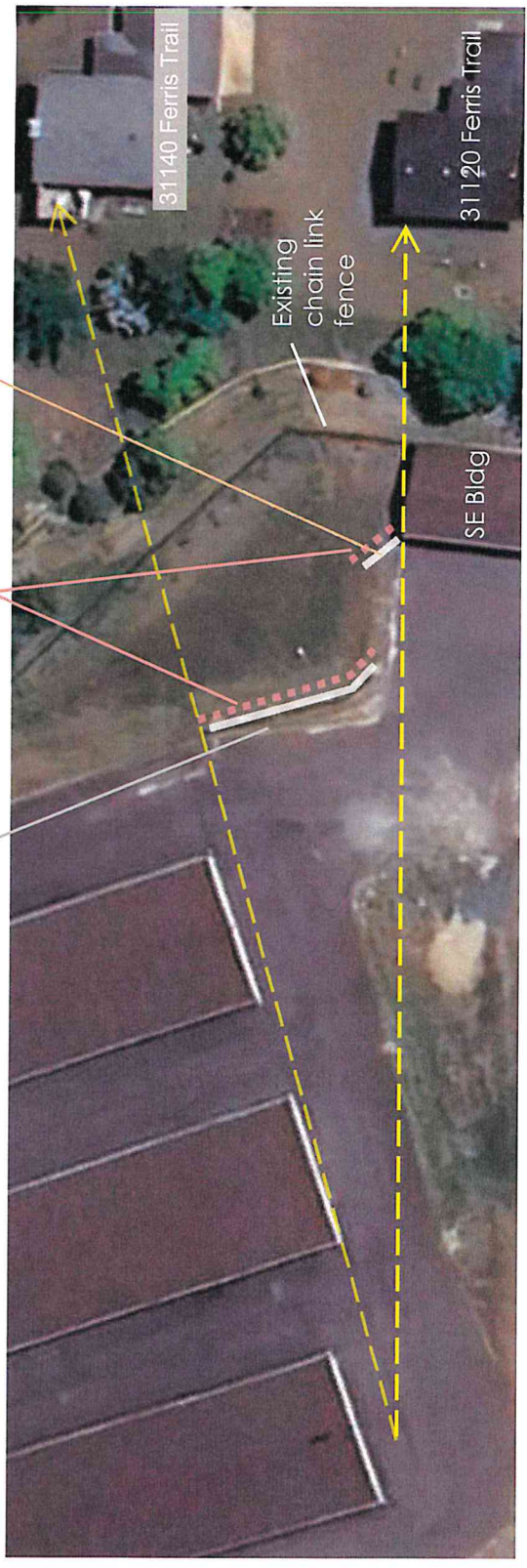
Attachment: Screening to Residences Figure Drawing

CC: Angela Comstock, Tanya Smolke, Michelle Hayes, James Monge, and Phil Carlson



Existing 6 ft wood fence

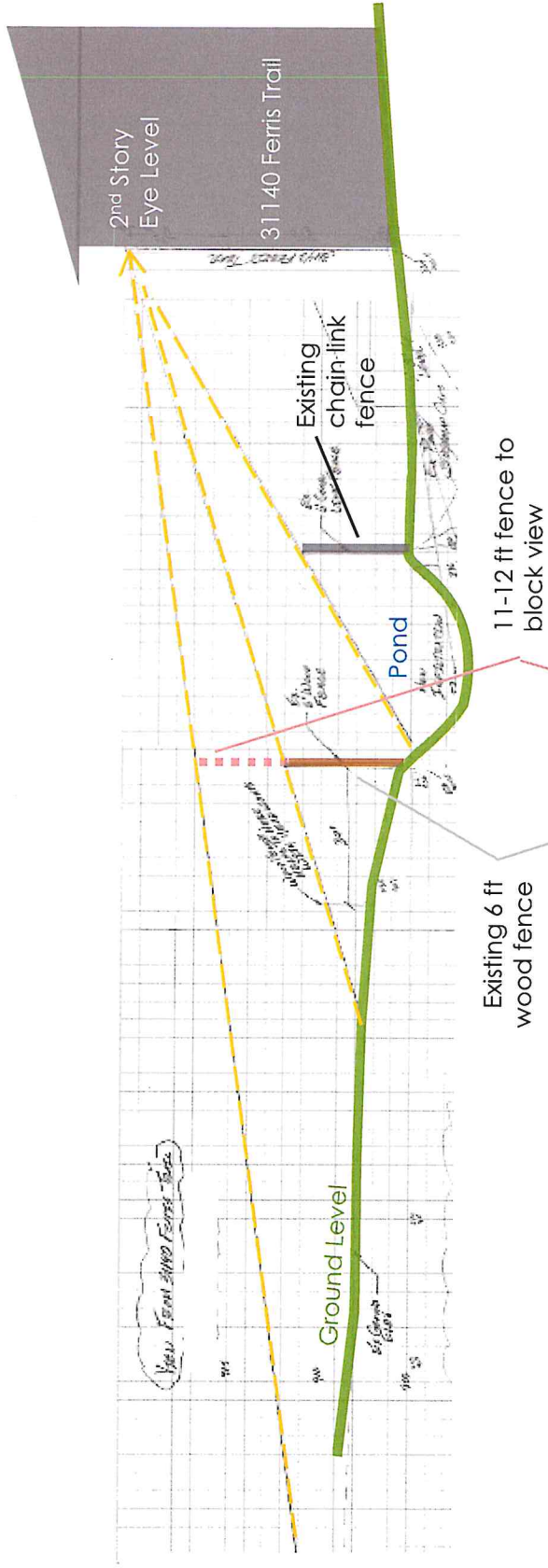
11-12 ft fence to block view



Stacy Indoor Outdoor Storage – Screening to Residences

Approximate for discussion 4-4-2024





Stacy Indoor Outdoor Storage – Screening to Residences

Approximate for discussion 4-4-2024

